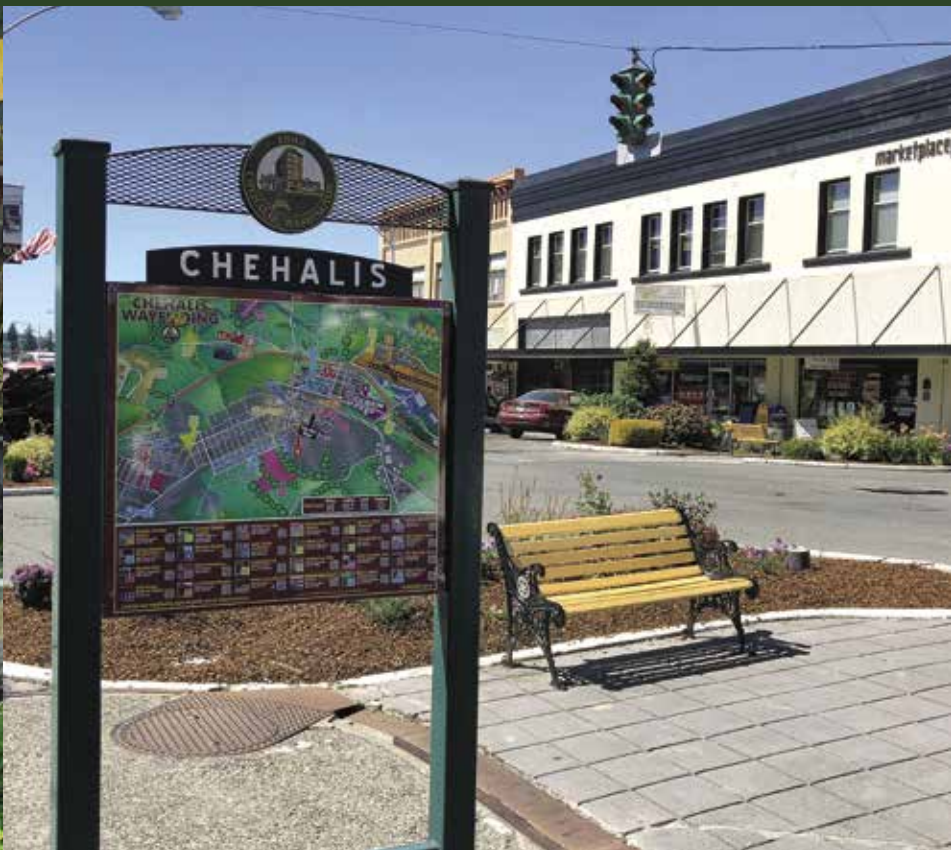


CHEHALIS

WASHINGTON



Where Business and Lifestyle Meet





Embracing history with an eye to the future! Join our downtown revitalization momentum. Businesses are locating and expanding in our downtown district.

- Fiber optic high-speed internet is now available in the downtown corridor.
- Historic Chehalis Theater renovated and re-opened in 2016.
- Rural meets downtown! Black Sheep Creamery, a local farm, opened a specialty cheese shop in 2015.
- Several businesses recently moved locations within downtown to invest in their own buildings.
- Downtown Business Facade Program has granted \$20,000 to encourage further investment in downtown generating multiplied further investments.
- Vernetta Smith Timberland Library received community investments of \$4 million for new state-of-the-art facility.

Chehalis: Embracing Growth and Prosperity

Excitement is in the air and momentum is mounting as Chehalis embraces growth and prosperity! From new small businesses to manufacturing facilities, to large investments in education and increasing investments downtown, Chehalis is primed for future expansion.

- City of Chehalis, Port of Chehalis, Chehalis Community Renaissance (Revitalization) Team, along with community organizations and business leaders, enjoy a unique and dynamic collaborative working relationship.
- The Port of Chehalis is experiencing unprecedented success with the highest number of property sales in a single year.
- Chehalis was accepted into Washington State's Main Street Program in 2014. The program's goal is to revitalize downtowns and neighborhood business districts by leveraging local assets.
- Chehalis Community Renaissance (Revitalization) Team began work in 2009 on a strategic 20-year plan to enhance job opportunities and the involvement of youth, increase tourism and support local retailers, restaurants and hotels.
- The Chehalis Foundation invested \$1.3 million in education with \$1.5 million committed for the next five years.
- STEM (Science, Technology, Engineering, Math) program and new STEM building at Chehalis W. F. West High School funded by recent grant.
- Two new state-of-the-art Chehalis elementary schools open in 2018.
- Gail and Carolyn Shaw Aquatics Center is a popular destination for both travelers and locals after its \$2.7 million renovation in 2014.
- Boys & Girls Club of Chehalis opened its doors to the community in 2017 featuring a new 7,000 square-foot facility.



"I chose Chehalis because of the tight-knit community, and the affordability. Overall, the overhead of keeping my business running, was reduced by about 40% moving it from Eastern Washington to Chehalis. I was able to expand twice in two years, and it just continues to grow."

- Tanya Domashchuk, Breathe Easy



The Statistics

Chehalis Population	7,391
Lewis County Population	75,882
Median Age	33.5
Median Home Value	\$232,400 (10% increase in past year)
Climate:	Warm summer Mediterranean, and yes, we do have rain!
Air Quality Index:	38.0 - Excellent (National average: 74.7)
Chehalis Retail Sales Tax	8.2%
No Corporate Income Tax	

Savor Work-Life Balance

Optimize your work-life balance. Exchange the traffic and congestion for a lifestyle that is peace-filled, sustainable and productive.

Restaurants & Local Fare

- Visit a variety of restaurants offering locally-sourced foods and live entertainment.
- Chehalis Farmers Market is abuzz with fresh local produce as well as cheeses, honey, eggs and beef. Enjoy locally grown fresh flowers, products by local artisans, and a medley of musicians.

Arts & Entertainment

- Historic Chehalis Theatre showcases a variety of movies, local talent and national performers.
- Vernetta Smith Timberland Library archives a treasure of knowledge in its vast library selections...with the only drive-through window in the state!
- Veterans Memorial Museum and the Lewis County Historical Museum invite peeks into a treasured history of local and national heroes.
- Chehalis-Centralia Railroad & Museum offers a unique quest on a vintage 1915 steam train replete with holiday excursions and mystery dinners - a delight for locals and visitors alike.
- Tour downtown and residential historic districts via your mobile device.

Kids Zone

- Gail & Carolyn Shaw Aquatics Center
- Boys & Girls Club of Chehalis
- Pacific Athletic Center
- Penny Playground at Recreation Park

Outdoor Adventure

- Two local golf courses!
- Rails-to-Trails: Walking, biking or hiking our unique trail system is popular for the outdoor enthusiast.
- Kayak, paddle boarding, boating, swimming in nearby lakes.
- Mount St. Helens National Volcanic Monument, Mount Rainier National Park and the Gifford-Pinchot National Forest are popular nearby destinations for exceptional outdoor recreation.
- Wildlife...after all, this is Washington!





Downtown Chehalis At-A-Glance

Accessibility

- Location! Just 90 miles to both Seattle and Portland.
- I-5 corridor access.
- Free parking throughout downtown.
- Close-in parking options makes business access easier and friendlier.
- Amtrak Centralia Station provides easy and convenient train travel.
- Chehalis-Centralia Airport.
- Deep water ports in nearby Olympia and Tacoma.

Availability

- The City of Chehalis has a business-friendly reputation. Permits through the city are fast, and staff is friendly and pro-business.
- Downtown Chehalis is a centralized source for professional business services: advertising agencies, insurance agents, financial services, legal practices, and real estate offices.
- Chehalis City Hall and Lewis County Government offices are both within walking distance.
- Find a complete list of available lease/sale spaces downtown on the Chehalis Community Renaissance Team website and call for an Opportunity Tour!

Evolving:

- Recent large-scale projects demonstrate the commitment of civic and private sector leaders to the community and reflect the trends of an evolving city.
- Chehalis citizens have higher-than-average education, income, and discretionary spending compared to the surrounding area.
- Chehalis recognizes and respects the paramount role of small business in our local economy.



Map & Resources

City of Chehalis - Building and Planning
1321 S Market Blvd
Chehalis, WA 98532
360-345-2229
www.ci.chehalis.wa.us/building

City of Chehalis - City Hall
350 N Market Blvd
Chehalis, WA 98532
360-345-1042
www.ci.chehalis.wa.us

City of Chehalis - Public Works
2007 NE Kresky Ave
Chehalis, WA 98532
360-748-0238
www.ci.chehalis.wa.us/publicworks

Centralia-Chehalis Chamber of Commerce
500 NW Chamber of Commerce Way
Chehalis, WA 98532
360-748-8885
chamberway.com

Chehalis Community Renaissance Team
60 NW Boistfort St | P.O. Box 191
Chehalis, WA 98532
360-345-1738
www.experiencechehalis.com

Lewis County Economic Development Council
1611 N National Ave
Chehalis, WA 98532
360-748-0114
www.lewisedc.com

Lewis County Public Health
360 NW North Street
Chehalis WA 98532
360-740-1223
lewiscountywa.gov/publichealth

Port of Chehalis
321 Maurin Rd
Chehalis, WA 98532
360-748-9365
www.portofchehalis.com

Public Utility District No. 1 of Lewis County
321 NW Pacific Ave
Chehalis, WA 98532
800-562-5612
www.lcpud.org



Find a list of available spaces for sale and rent in downtown Chehalis
at www.experiencechehalis.com/available-spaces.

Produced by the Chehalis Community Renaissance Team ©2018