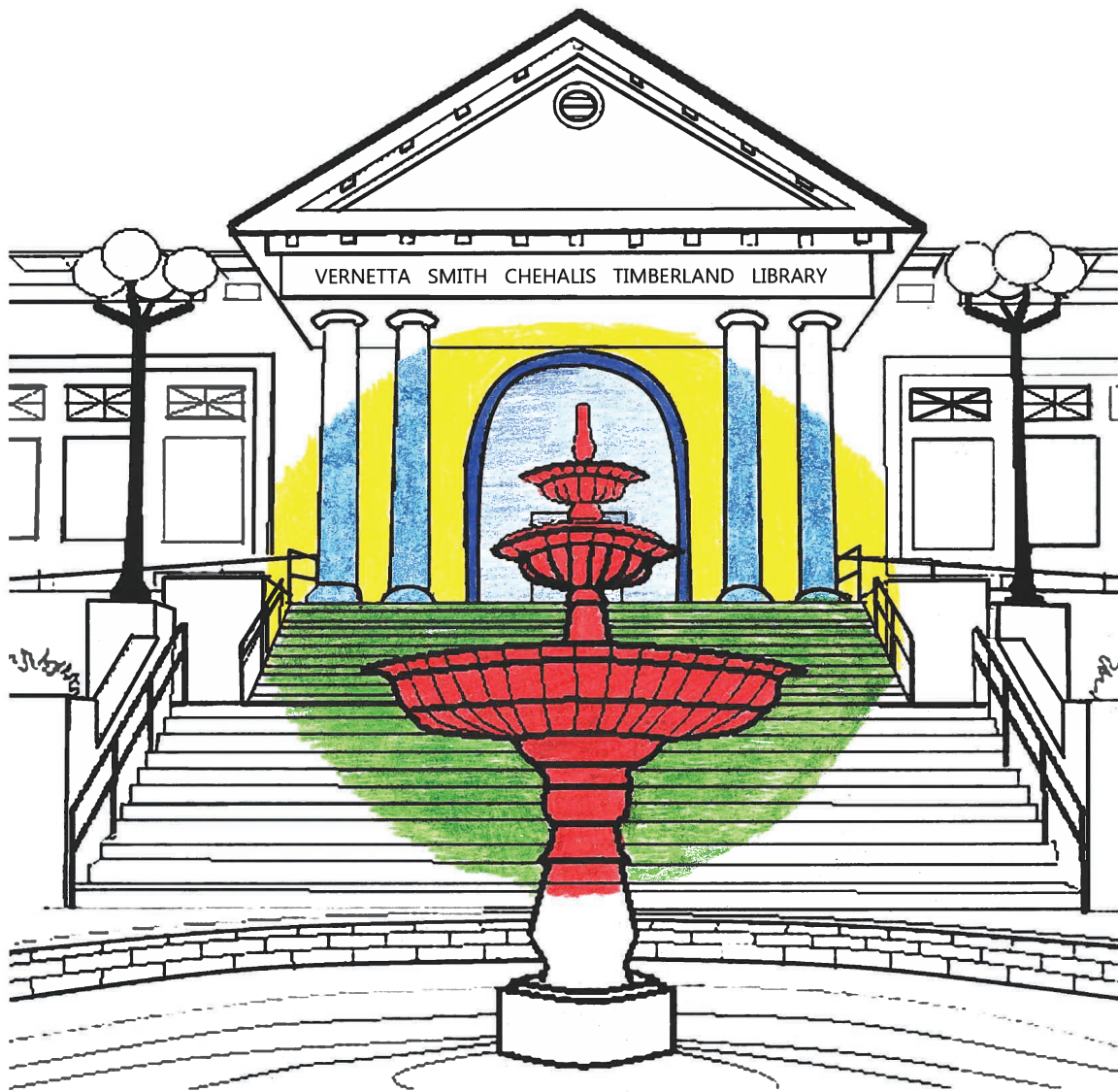


Color Chehalis!

ACTIVITY BOOK & WALKING TOUR FOR KIDS



BY THE CHEHALIS COMMUNITY RENAISSANCE TEAM

Introduction

Color your way through Downtown Chehalis and make new discoveries about our hometown! Inside this book you'll find puzzles, games, and pages to color. Learn all about the history of Chehalis, and have fun!



COLOR CHEHALIS! A KIDS ACTIVITY BOOK & WALKING TOUR is a new work, first published by the Chehalis Community Renaissance Team 2021.

All illustrations in this book are copyrighted by the original artists. You may use the designs and illustrations for graphics and craft applications, free and without special permission, provided that you include no more than four in the same publication or project. [For permission for additional usage please contact CCRT at info@experiencechehalis.com.] Republication or reproduction of any illustrations in this book for other books, online, or as any other design resource is strictly prohibited without express permission from the Chehalis Community Renaissance Team.

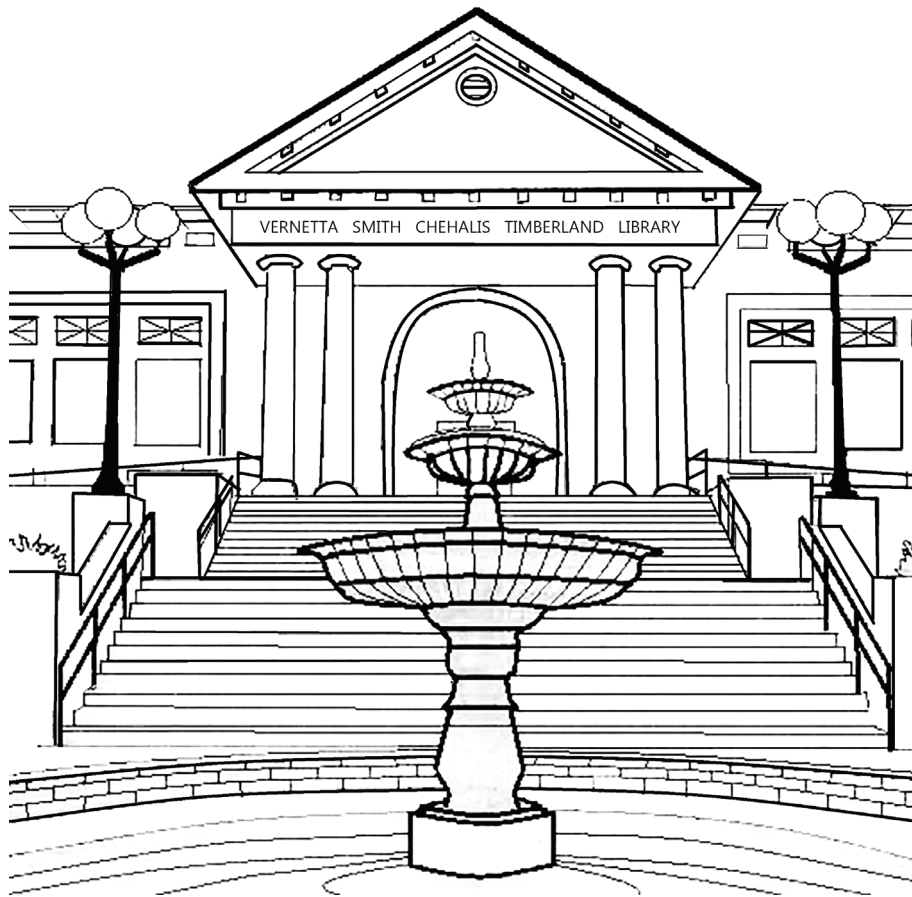
The mission of the Chehalis Community Renaissance Team (CCRT) is to cultivate relationships and celebrate community to deliver a more vibrant Chehalis. CCRT is an active member of the Washington Main Street Program.

Printed in the United States of America
Chehalis Community Renaissance Team
60 N Boistfort St. #1 | PO Box 191, Chehalis, WA 98532
360-345-1738 | info@experiencechehalis.com
www.experiencechehalis.com

*Special thanks to Michele Gallagher for the project inspiration and activity puzzles,
Sara Light-Waller for the coloring book layout and editing,
and Annalee Tobey for cover designs and project coordination.*

Color Chehalis!

ACTIVITY BOOK &
WALKING TOUR FOR KIDS

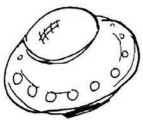
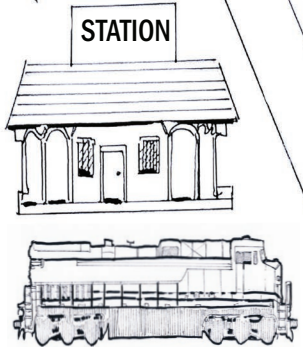


We love our hometown!

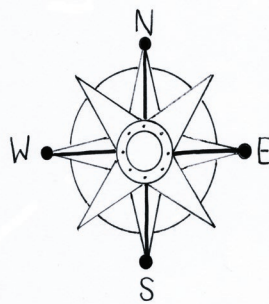
This book belongs to: _____

Age: _____

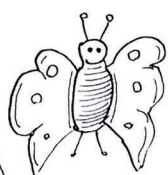
8



MCKINLEY STUMP



FRONT STREET



6



PACIFIC AVE

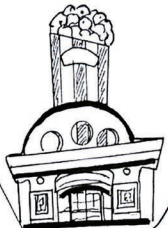


BOISTFORT STREET



CHEHALIS
CHILDREN'S
WALKING TOUR
CHEHALIS, WA

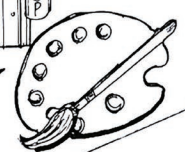
PARK STREET



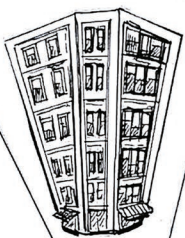
7



5



4



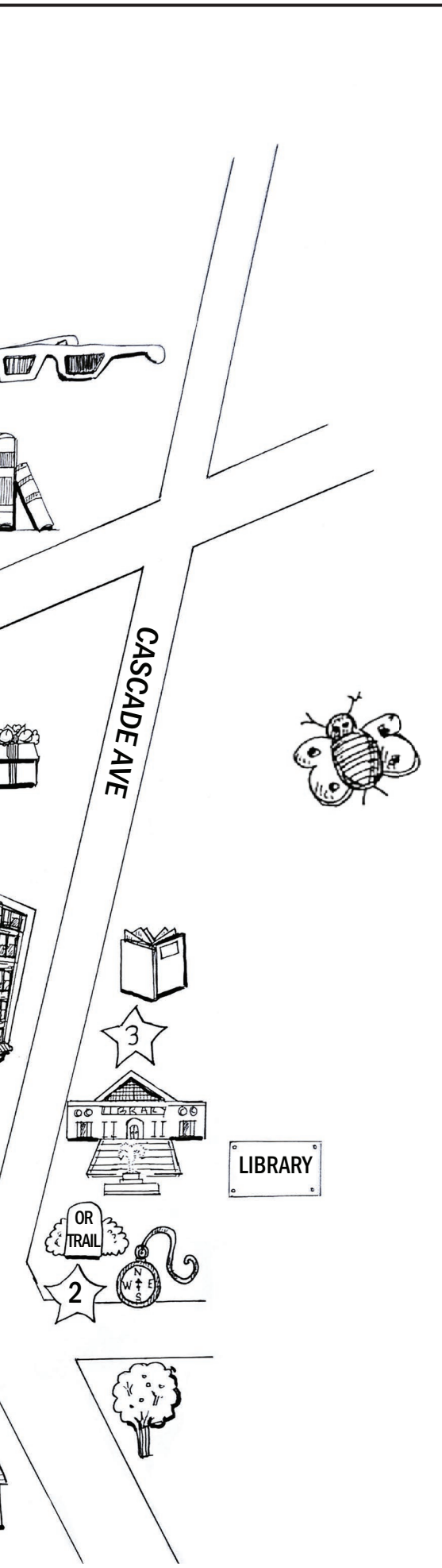
1



List of Locations

Match the starred number on the map to the list below.

1. **Westminster Presbyterian Church**
(349 North Market Blvd.)
Historic church with beautiful stained glass windows. Wow!
2. **Ezra Meeker Marker** (350 North Market Blvd.)
Marks the Oregon Trail Cutoff to Puget Sound traveled by pioneer, Ezra Meeker, in 1852.
3. **Vernetta Smith Library** (400 North Market Blvd.)
Take a selfie at the fountain!
4. **St. Helens Hotel** (440 - 448 North Market Blvd.)
Did you know this is the second St. Helens Hotel?
5. **Book 'N' Brush** (518 North Market Blvd.)
Books, and art supplies, and toys – oh my!
6. **Sweet Inspirations** (531 North Market Blvd.)
Lunch with pie! Ice cream sodas!
7. **Chehalis Theater** (558 North Market Blvd.)
See a movie when you're visiting downtown.
8. **The Lewis County Historical Museum**
(599 Northwest Front Way)
The train display is amazing and you can make it run!





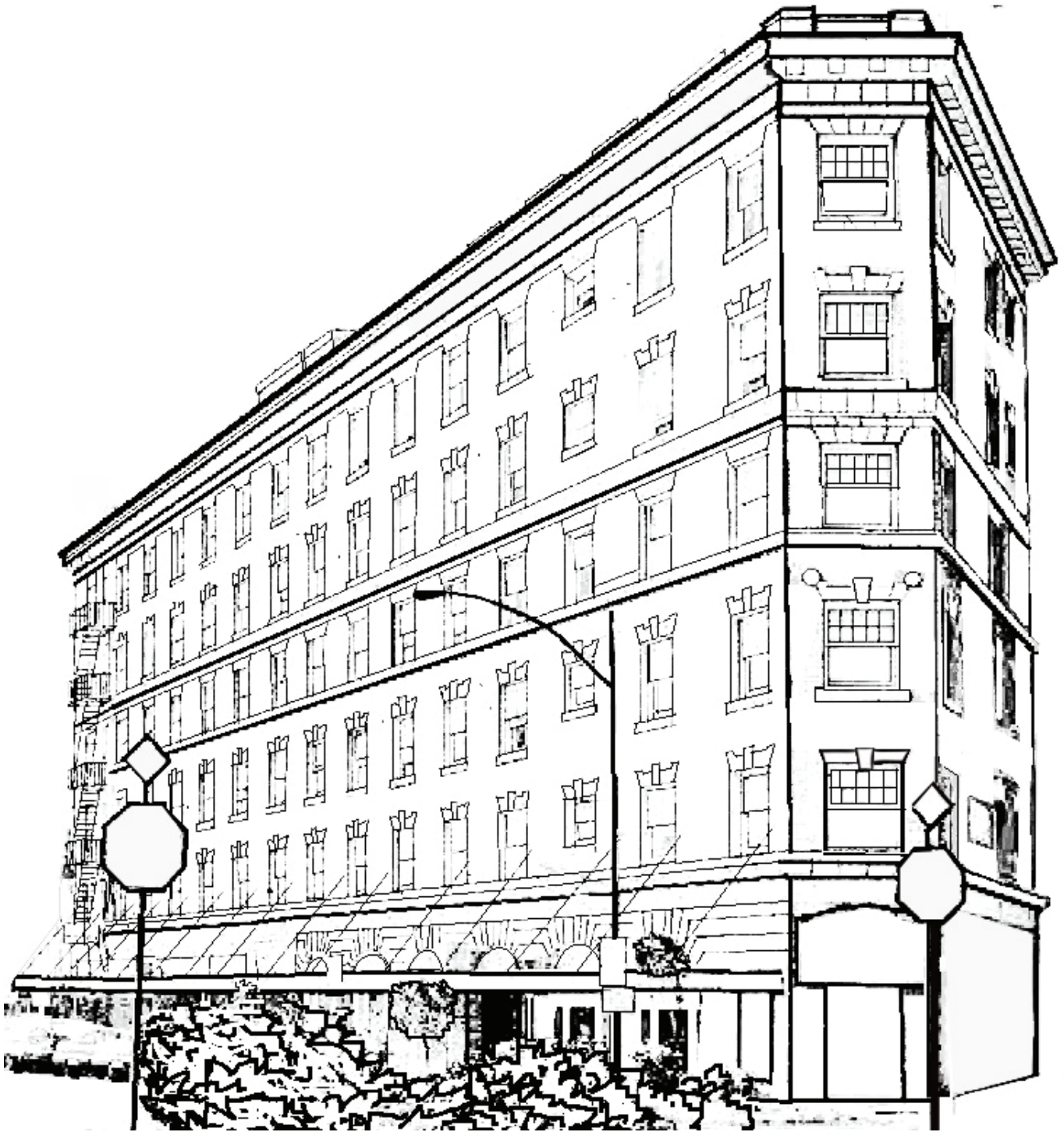
Westminster Presbyterian Church was originally built in 1908, over 100 years ago! The church was first organized in 1855 about three miles away in Claquato before moving to the location you see today. Look closely at the beautiful, stained-glass windows and you can see scenes from the church's long history!



Did you know pioneers who traveled the Oregon Trail camped in our area on their route to Puget Sound? The Oregon Trail, stretching from Missouri to the Pacific Ocean, was the most important route west for settlers in the 1840s - 1870s. Many pioneers found our area by taking this trail west. In 1852, a man named Ezra Meeker and his family traveled the Oregon Trail in a covered wagon pulled by oxen. The marker you see today is placed on the spot where Ezra Meeker camped. Can you imagine wagons and oxen in Chehalis?



Many people worked together to build the Vernetta Smith Chehalis Timberland Library in 2008. Isn't it beautiful? It replaced the original Chehalis Library built in 1908. The fountain in front of the library was designed to look just like a fountain that once stood in downtown Chehalis. This library has a drive-through window. It was the very first library drive-through window in Washington State!



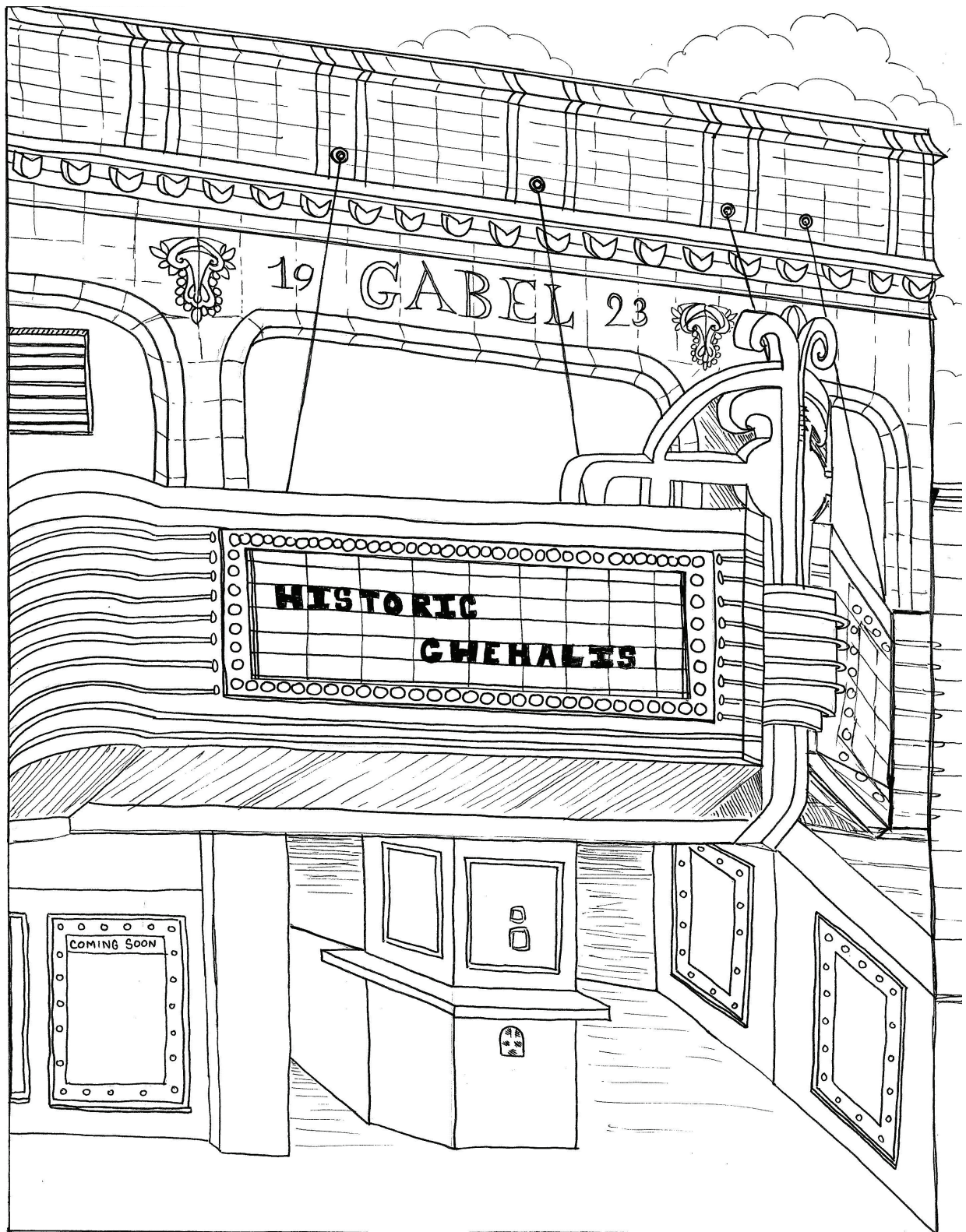
Did you know the St. Helens Hotel, built in 1917, is the tallest building in Chehalis? It's not only tall, but has a very unique shape! Many important people have stayed at the St. Helens Hotel. The most famous was President Theodore Roosevelt, who checked in on May 23, 1914. Can you imagine a United States president staying in downtown Chehalis?



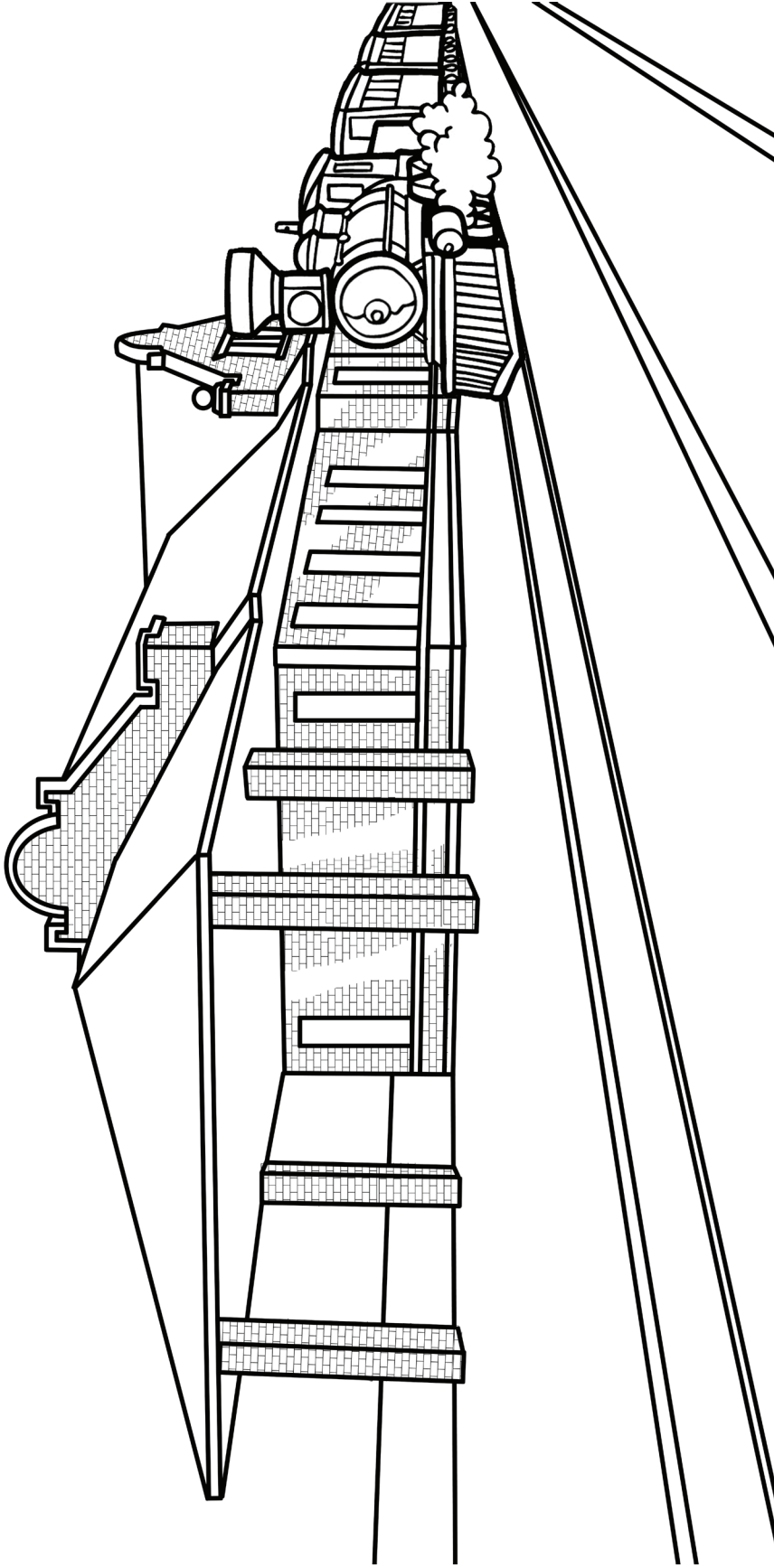
Look closely at the brick wall of Book 'N' Brush. See the painted advertisement for Levi's overalls? This building was once home to a large clothing store like you find in many malls today. It was called Hartman & Nathan. After the department store closed, the building was a grocery store, a stationary store, and a butcher shop. It became Book 'N' Brush in 1983. Today you'll find great books and art supplies here. Book 'N' Brush loves helping kids learn to love reading and creating!



Did you know the soda fountain at Sweet Inspirations originally came from the historic St. Helens Hotel? That's right! Kids have been enjoying treats at this fountain for a long time. Sweet Inspirations is a family-owned business that has been serving families delicious meals for over 30 years. And don't forget dessert! They are especially known for their homemade pies, cakes, old-fashioned ice cream, sodas, and malts.



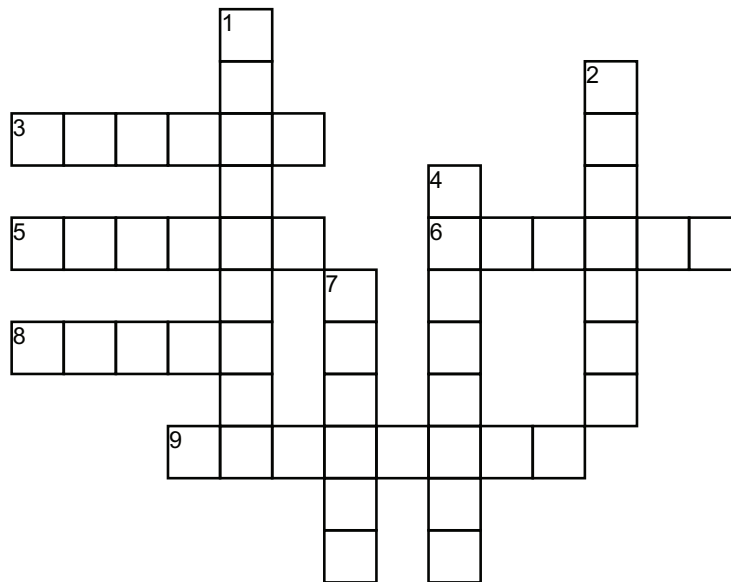
Isn't it cool to have a theater right in Downtown Chehalis? This beautiful building was constructed in 1923 as an auto dealership to sell cars, believe it or not! In 1938, it was remodeled and became the Pix Theater. In 1954, the name was changed to the Chehalis Theater. Today you can still watch a movie or concert and even enjoy a meal while you watch!



Today this building is home to The Lewis County Historical Museum, but did you know it was once a train station? It was built in 1912 for the Northern Pacific Railroad. Do you see the large tree stump outside the museum? It is very important to Chehalis' history. It is called the "McKinley Stump." It was cut from a 360 year-old tree to serve as a speaking platform for President William McKinley in 1901. Unfortunately, President McKinley never made it to Chehalis, but President Theodore Roosevelt did! On May 23, 1903 he gave a speech from this very stump. Later, Presidents William Howard Taft and Franklin D. Roosevelt also spoke to the Chehalis community from the McKinley Stump.

Chehalis Crossword Puzzle

Okay kids! Use the clues to solve the puzzle.



Across

3. Ezra Meeker was traveling the _____ Trail when he came to Chehalis.
5. Each spring and summer, local farmers gather with their goods for sale here in downtown Chehalis.
6. Westminster Presbyterian in Chehalis is a _____.
8. Watch a _____ on the big screen in downtown Chehalis.
9. The name of a nearby volcano, and also the name of Chehalis' largest building downtown.

Down

1. In 1914, this United States president stayed at the St. Helens Hotel.
2. The place in Chehalis to borrow books.
4. This is a sweet treat served at Sweet Inspirations.
7. Once it was a busy train depot, today it is home to Lewis County's historic artifacts.

Historic Chehalis Word Search

S D C X E F D H E A W I F J L R U
P F H C J I X I R I U U J E H R R
H O U E U W I S N P Z E P M R E D
U U R V G T N T H T O V U M L X U
U N C C F I B O W X J L R S D N Z
S T H C A U M R N D W Z B W E A P
H A B Z M U X Y I D B H O T E L S
C I N R I S T R E E T F W K K I W
T N V Z L R W Q N K L H O K G B R
R U E T Y P V M E E K E R U C R D
A O R H U F A H O M E W C F H A L
I R X E P Z L L R Z R R S N E R T
N K S A W F L Z Y R A T Q T H Y Z
N B W T H T E M V N V O B R A C E
T J D E Z D Y I C B C W A M L J Q
I A D R T M U S E U M N P Y I O O
Y W Q R J W R L R Y M Y G C S D P

VALLEY TRAIN TOWN THEATER STREET MUSEUM MEEKER LIBRARY
HOTEL HOME HISTORY FOUNTAIN FAMILY CHURCH CHEHALIS

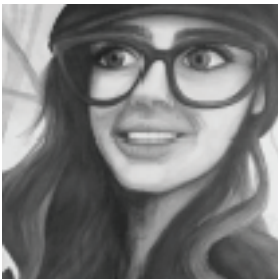
Get to Know the Authors & Artists

Emily von Flotow



Emily von Flotow is a painter and artist of repurposed textiles from the Willipa Hills of Southwest Washington. Her semi-abstract paintings, illustrations, and murals feature vibrant colors, often accented with metallics. She primarily depicts scenes of nature from the Pacific Northwest—wildflowers and mushrooms, coastal landscapes and mountains. Emily lives with her husband and children in Chehalis, WA. See her drawing of Book ‘N’ Brush on page 10 and The Chehalis Theater on page 11.

Irisa Kennedy



My name is Irisa Kennedy. I have always been an artist ever since I could remember. Now that I am an adult, I find myself painting murals along with fine art, both of which are inspired by my true passions—the love of nature, identification of flora, fauna, clouds and a special interest in trees. See her drawing of Sweet Inspirations on page 6.

Jason Mattson



Jason Mattson is a Centralia native who currently resides in Chehalis, WA with his wife and six pets. He is the director of the Lewis County Historical Museum and has a love for art and hopes that everyone has fun coloring in this book. See his drawing of the Lewis County Historical Museum on page 13.

Sara Light-Waller



Hi! My name is Sara Light-Waller. What are your favorite things? Mine are creating illustrations and writing stories! I've published several children's books and two adult, illustrated science fiction books. Although I grew up on the East Coast, I've lived in Washington for many years. When I'm not drawing or writing, you'll find me in my garden or painting murals somewhere in town. See her drawing of Ezra Meeker Marker on page 7 and the fun town map at the beginning of the coloring book.

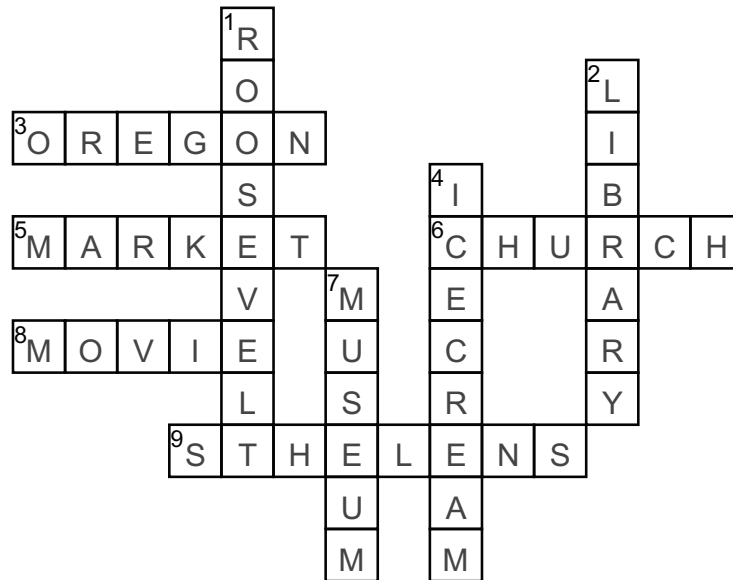
Thomas Sutley



I graduated from W.F. West and completed my A.A. at Centralia College. I've lived in the greater Lewis County area for my entire life. I'm as local as it gets. I've been painting or drawing for as long as I can remember. So much that it's littered my dreams-- dreams where I'm wandering our streets, alleys, and corridors gazing and mesmerized by facades teeming with seamless color, illustration and life. Now, I'm making that dream come true.

See his drawing of Westminster Presbyterian Church page 6, the Vernetta Smith Chehalis Timberland Library on page 8, and the St. Helens Hotel on page 9.

Crossword Puzzle Answer Key



Across

3. Ezra Meeker was traveling the _____ Trail when he came to Chehalis.
5. Each spring and summer, local farmers gather with their goods for sale here in downtown Chehalis.
6. Westminster Presbyterian in Chehalis is a _____.
8. Watch a _____ on the big screen in downtown Chehalis.
9. The name of a nearby volcano, and also the name of Chehalis' largest building downtown.

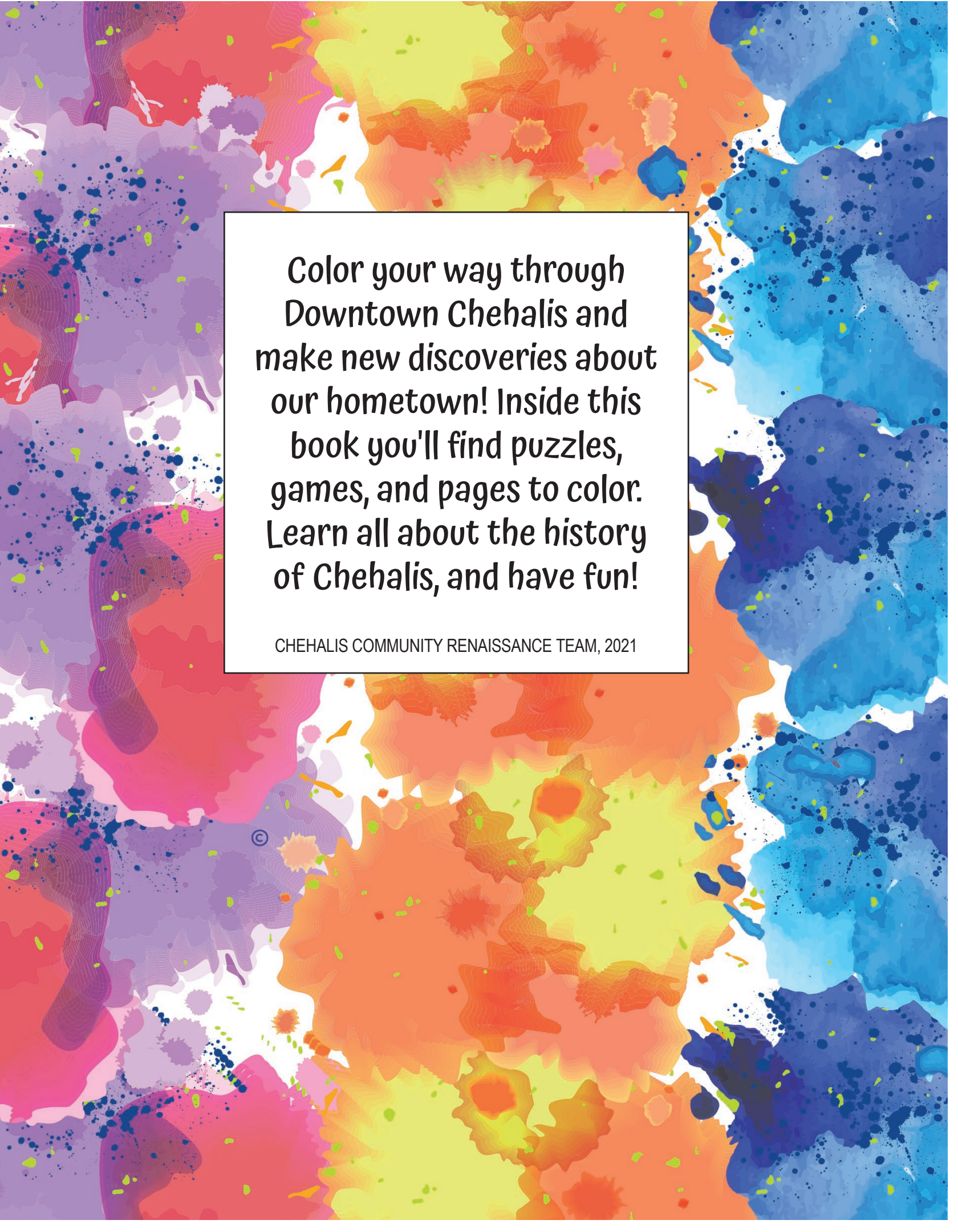
Down

1. In 1914, this United States president stayed at the St. Helens Hotel.
2. The place in Chehalis to borrow books.
4. This is a sweet treat served at Sweet Inspirations.
7. Once it was a busy train depot, today it is home to Lewis County's historic artifacts.

Word Search Answer Key

S D C X E F D H E A W I F J L R U
P F H C J I X I R I U U J E H R R
H O U E U W I S N P Z E P M R E D
U U R V G T N T H T O V U M L X U
U N C C F I B O W X J L R S D N Z
S T H C A U M R N D W Z B W E A P
H A B Z M U X Y I D B H O T E L S
C I N R I S T R E E T F W K K I W
T N V Z L R W Q N K L H O K G B R
R U E T Y P V M E E K E R U C R D
A O R H U F A H O M E W C F H A L
I R X E P Z L L R Z R R S N E R T
N K S A W F L Z Y R A T Q T H Y Z
N B W T H T E M V N V O B R A C E
T J D E Z D Y I C B C W A M L J Q
I A D R T M U S E U M N P Y I O O
Y W Q R J W R L R Y M Y G C S D P

VALLEY TRAIN TOWN THEATER STREET MUSEUM MEEKER LIBRARY
HOTEL HOME HISTORY FOUNTAIN FAMILY CHURCH CHEHALIS



**Color your way through
Downtown Chehalis and
make new discoveries about
our hometown! Inside this
book you'll find puzzles,
games, and pages to color.
Learn all about the history
of Chehalis, and have fun!**

CHEHALIS COMMUNITY RENAISSANCE TEAM, 2021